



# BayPort™

## Storage Solution

## Operating Manual



# Table of Content

<b>Symbol Description .....</b>	<b>2</b>
<b>Warnings and Cautions.....</b>	<b>3</b>
Intended Use .....	3
<b>Overview.....</b>	<b>4</b>
System Description .....	4
<b>Installation .....</b>	<b>5</b>
<b>Operation.....</b>	<b>8</b>
<b>Cleaning and Maintenance .....</b>	<b>10</b>
Storage Unit.....	10
<b>Specifications .....</b>	<b>11</b>
<b>Troubleshooting and Service .....</b>	<b>12</b>

# Symbol Description

These important symbols may appear on your Long Island Technology Group BayPort™. Please note their meaning.



CE marking of conformity indicates this device complies with Regulation (EU) 2017/745 on medical devices.



More information for this product can be found in this operating manual.

# Warnings and Cautions

Users of this product should be thoroughly trained in the appropriate medical procedures. Also they should read and understand this owner's manual for this product and all equipment used with it.



Read and understand the Operating Manual before using the unit.



Use BayPort™ Storage Solution only with BFW™/Long Island Technology Group™ products or accessories.



**DO NOT** subject the BayPort™ Storage Solution to strong shocks, which include but are not limited to dropping the unit on the floor.



**DO NOT** use this unit for anything other than its intended use.



**DO NOT** modify this equipment.



**DO NOT** open unit. No serviceable components are inside device.



**DO NOT** apply excessive force to the hangers.



Mount the unit in a visible location.



**WARNING** Falling Hazard: avoid sitting or standing under the unit when it is mounted.



**DO NOT** use non-approved mounting schemes.

## Intended Use

The BFW™ BayPort™ Storage Solution is intended to only store BFW™ headlight systems on BFW™ headbands. The additional storage is intended to store headband replacement pads.

# Overview

## System Description

The BFW™ BayPort™ Storage Solution is constructed of a durable metal housing. Hangers allow up to two BFW™ headlight systems to be stored easily. Additional storage is provided via the center pocket.

Multiple mounting solutions are available such as wall mounted and a mobile configuration.

# Installation

## Wall Mount

1. Follow GCX instructions to mount the rail to the wall.



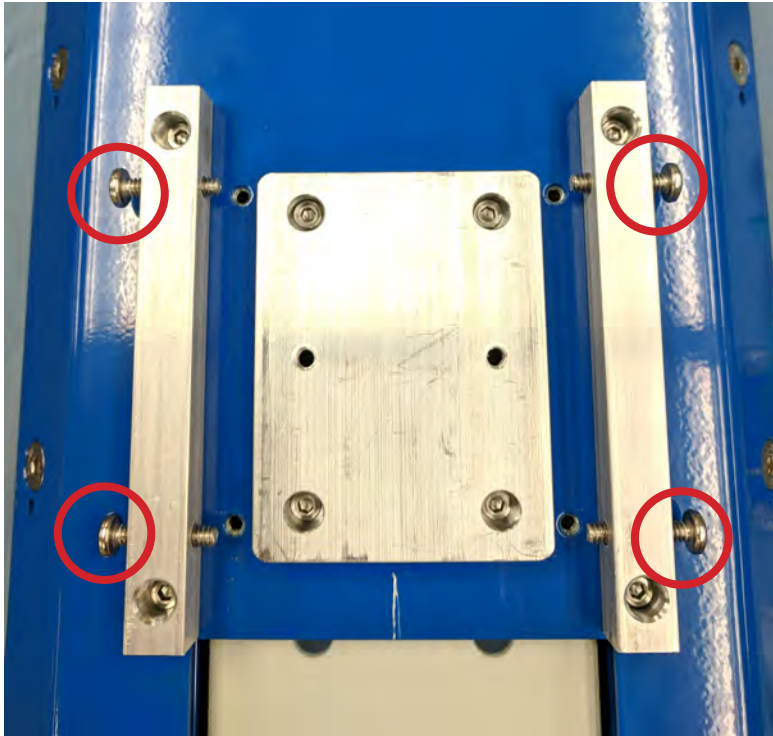
NOTE: Do not attach the Depressible Channel Stop provided with the GCX Rail

2. The Adjustable Stop can be moved by loosening the Set Screw using a 1/8" Hex Screw Driver.



# Installation

3. Check that the four Rail Locking Screws are threaded as shown below. If the screws are threaded too far then it won't slide into the rail.



4. Slide the unit onto the rail. The center block fits in the center channel of the rail.



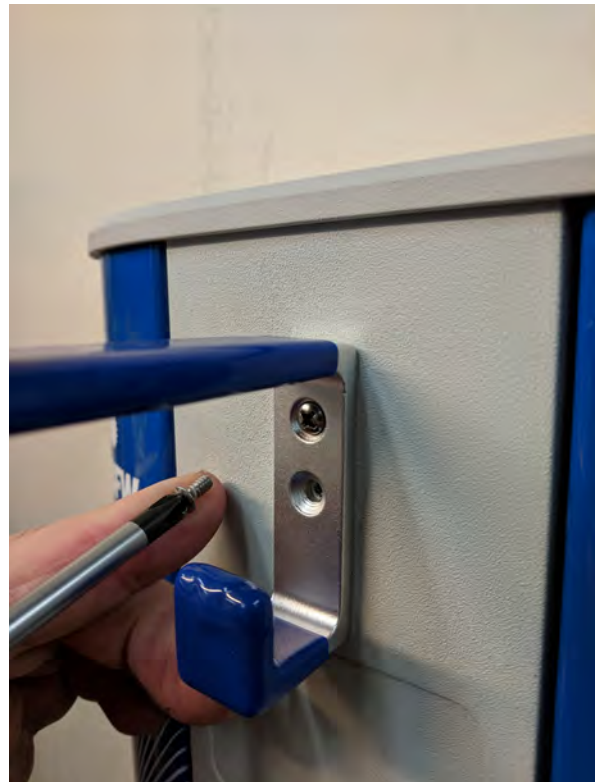


# Installation

5. Tighten the four Rail Locking Screws evenly.



6. Attach the Hooks to either of the two sets of mounting holes with the longer hook towards the top. The additional set of mounting holes can be used if the Hook becomes too loose.



# Operation

## Mounting Headlights

1. Remove any batteries from the holster.
2. Disconnect the headlight from the holster.
3. Place the holster on the lower hook via the Access Hatch on the bottom of the holster.



4. Place the headband on the top hook through the back brace.



# Operation

5. Wrap the headlight cable around the hook behind the headband.



6. Up to two headlights can be mounted at one time.



# Cleaning and Maintenance

## Storage Unit

1. Clean the BayPort™ Storage Solution with any cleaning wipe.
2. Use a can of compressed air to clean out any dust accumulations.



**DO NOT** use any sterilization process or cleaning process using excessive heat or humidity as it will damage the unit

**Note:** Damaging any part of the system with the use of improper cleaning agent or cleaning process will void all warranties.

# Specifications

Mechanical	
Storage Solution	
LxWxH	19.25" x 8.25" x 2.5"
Weight	8.8 lbs

# Troubleshooting and Service

Symptom	Possible Issue	Solution
Unit is unsteady	Rail Locking Screws are loose	Tighten Rail Locking Screws
	GCX Rail is loose	Refer to GCX Mounting Manual
Hanger pulled out	Hook Mounting Holes are stripped	Use additional Mounting holes
Too Low/High	Adjustable Stop too low/high	Move Adjustable Stop
	Adjustable Stop not installed	Install Adjustable Stop

## Warranty and Service

Warranty against manufacturer's defects applies to the BayPort™ Storage Solution under normal use for one (1) year from the date of sale from Long Island Technology Group (includes parts and labor).

The warranty does not cover products damaged by the following:

- Accident, misuse, abuse, or alteration
- Servicing by unauthorized persons
- Use with unauthorized accessories

In all cases Long Island Technology Group, reserves the right to determine the cause of all malfunctions and at its sole discretion will determine the damage and/or repairs that are covered under this warranty.

Send All Inquires To:

Long Island Technology Group, LLC  
60 Carolyn Blvd  
Farmingdale, New York 11735  
USA

[www.litgp.com](http://www.litgp.com)

[support@litgp.com](mailto:support@litgp.com)

Tel: (631)-270-4463

Fax: (631)-414-7078



Obelis s.a.

Bldv Général Wahis 53  
1030 Brussels, Belgium

Tel: +(32) 2.732.59.54

Fax: +(32)2.732.60.03

Email: [mail@obelis.net](mailto:mail@obelis.net)



Scan Here to See All Long  
Island Technology Group™  
Manuals

Or Visit: <http://www.litgp.com/manuals>




Contents are fragile.  
Handle with care.



[www.bfwinc.com](http://www.bfwinc.com)

Powered by  
**Long Island  
Technology  
Group**  
60 Carolyn Blvd, Farmingdale NY 11735  
(631) 270-4463 [litgp.com](http://litgp.com)

 Manufactured by Long Island Technology Group, LLC  
60 Carolyn Blvd, Farmingdale, NY 11735

Revision 1.3 3/16/2022